



Heath Hands  
The Dairy, Kenwood House  
Hampstead Lane, London  
NW3 7JN

020 8458 9102  
info@heath-hands.org.uk

## Heath Hands mid-year summary for 2016/17

Heath Hands is an independent charity formed in 1999 among other things to preserve and enhance the special character of Hampstead Heath and the Kenwood Estate. Our volunteers work in partnership with the City of London Corporation and English Heritage to support their conservation, learning, ecology and public event activities.

### Highlights of 2016/17 to date

- In August the charity reached 100,000 hours of volunteering since our founding. The milestone was marked with a wonderful celebration at Kenwood with volunteers (new and old), friends, CoL and EH staff and local VIPs taking part
- largest ever monthly volunteering contribution in July with over 1300 hours
- volunteer led conservation sessions launched as Heath Hands takes the lead in maintaining Whitestone Garden and the Education Garden
- opinion survey of membership undertaken to inform decision making

### Volunteer Activity

Figure 1: Total Heath Hands Volunteer contribution in hours per month. Current year in blue; 2015/16 in red

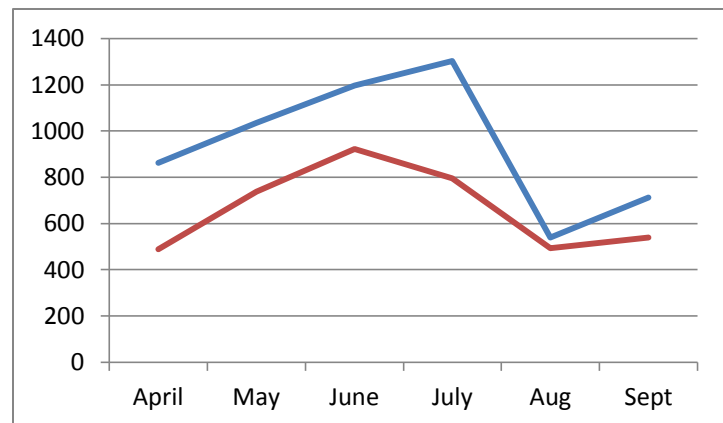
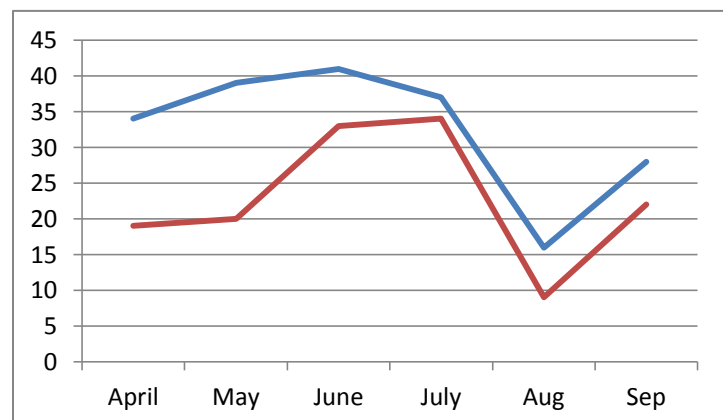


Figure 2: Total number of Heath Hands volunteer sessions per month (excluding office based, governance and wildlife monitoring). Current year in blue; 2015/16 in red





Heath Hands  
The Dairy, Kenwood House  
Hampstead Lane, London  
NW3 7JN

020 8458 9102  
info@heath-hands.org.uk

## **Membership Status (as at 30<sup>th</sup> September 2016)**

Membership:	179
Active Volunteers:	91%
Conservation Volunteers:	83%
Wildlife Interpreters:	13%
Wildlife Monitors:	7%
Office Volunteers:	5%
New volunteers recruited (since 1 <sup>st</sup> April):	48
Volunteers continuing after 3 months:	79%
Volunteers retired/left (since 1 <sup>st</sup> April):	26

## **Objectives for remainder of 2016/17**

- launch Heath Hands Strategic Plan (to 31<sup>st</sup> March 2020) in early 2017
- formalise relationship with CoL as Partnership Agreement finalised in late 2016
- consider incorporation of charity and enhance governance structures and procedures
- welcome the CoL Learning Team to the Hive and collaborate on delivery of Wild about Hampstead Heath
- continue volunteer recruitment drive and building of links with local community groups
- continue to support CoL and EH staff on the ground wherever our volunteers are needed